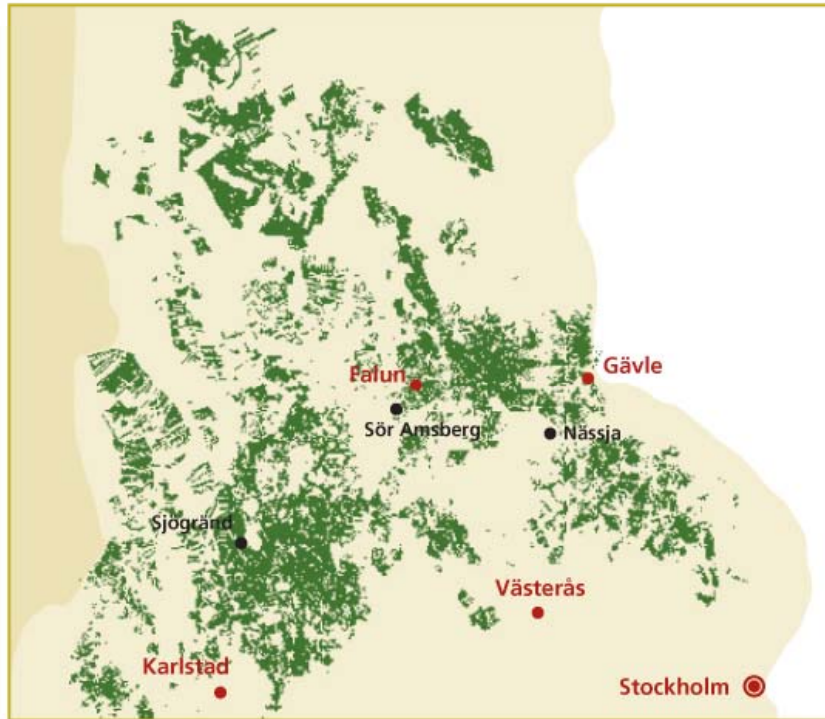


A forest company's view on the development in Canadian and Swedish forestry

Elisabet Salander Björklund
CEO Bergvik Skog AB

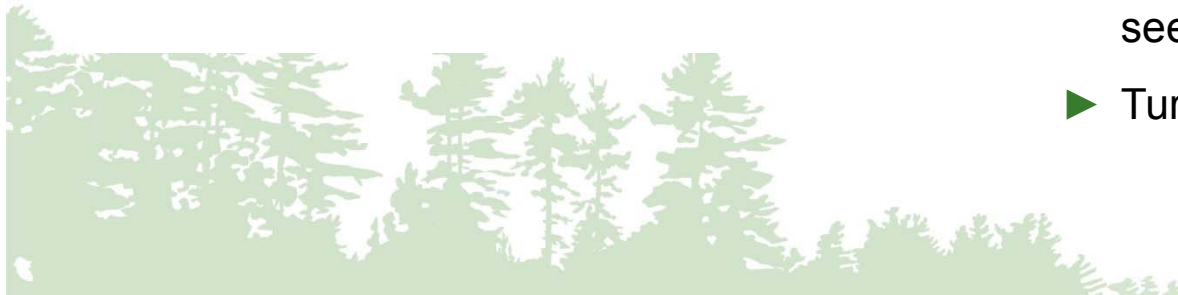
Bergvik Skog in Sweden

BERGVIK SKOG



- Bergvik Skog ABs markinnehav
- Plantskolor

- ▶ 2,3 millin hektar land
 - ▶ 5,6 % of Sweden's area
- ▶ 1,9 milj. ha productive forest land
 - ▶ 8,4 % of Sweden's productive forest area
- ▶ Yearly growth is about 9,3 million m³sub
- ▶ Yearly harvesting 6-6,5 million m³sub
- ▶ Stora Enso and Korsnäs partners
- ▶ 3 nurseries, 55-60 million seedlings
- ▶ Turn over c a 2,5 – 3 billion SEK



BERGVIK SKOG



www.bergvikskog.se

BERGVIK SKOG



www.bergvikskog.se