

# Perspectives on Canadian and Swedish forestry

---

Håkan Wirtén  
WWF Sweden

---

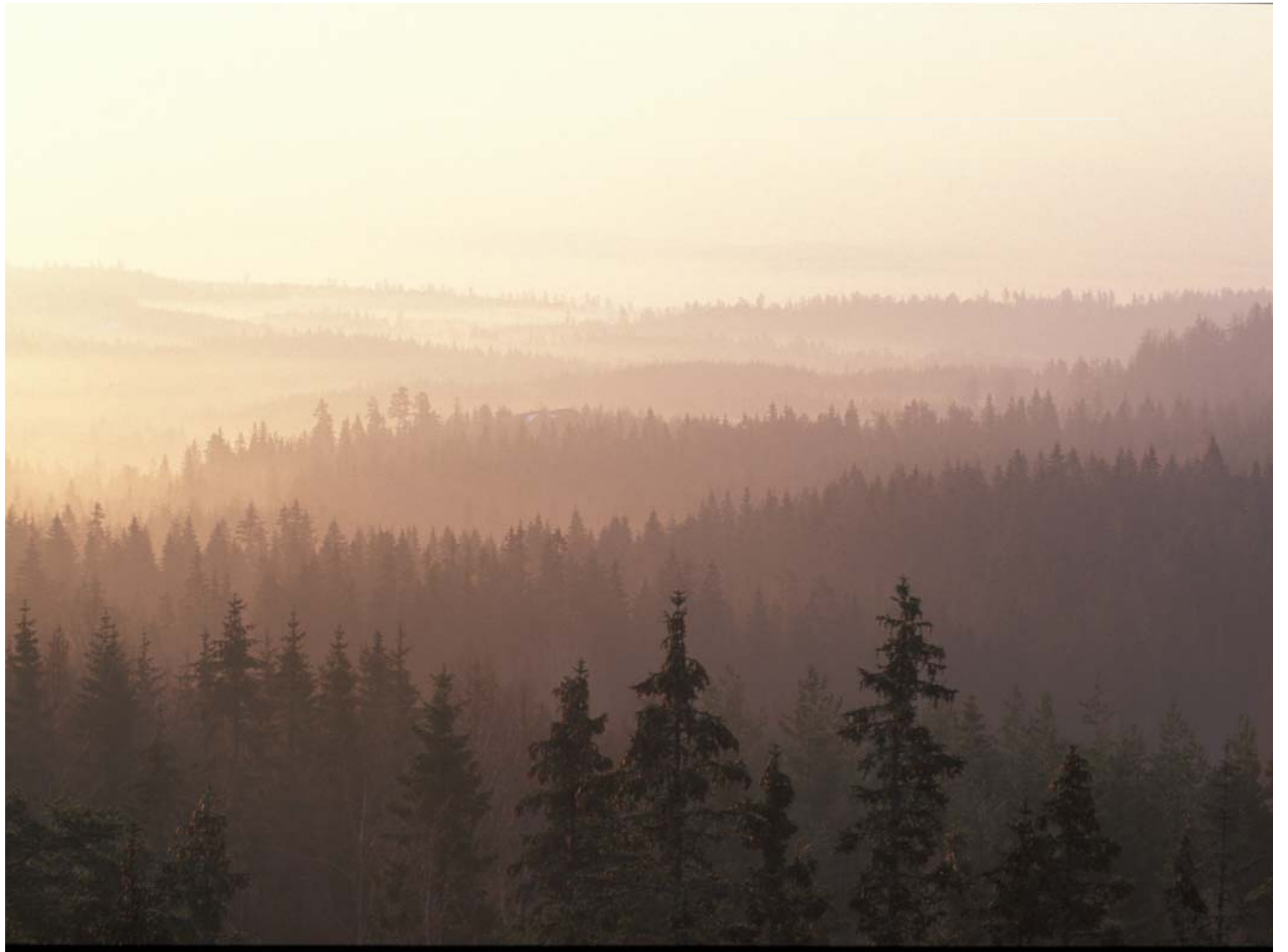


## Forests in Canada & Sweden – same same but different...

- Mostly boreal forests
- Major wood product exporters
- Forest sector play important economical roles
- Intense public debate about forestry

BUT...

- Large areas of primary / pristine forests still left in Canada
- Biodiversity and ecosystem services in a much better state in Canada





## Forests in Canada & Sweden – same same but different...

- Low levels of legally protected forests in Sweden with poor representativity
- Water issues strong focus in Canadian forestry
- Much higher levels of tree retention for conservation purposes in Canada
- Good national forest & biodiversity data in Sweden





# Challenges for Swedish forests

- Current forest policy model fails to deliver on key environmental aspects despite ambitious targets
- Increased pressure on the forest landscape due to trends for more intensive forestry, increased logging levels, climate change etc
- Increased conflicts around land use in Sweden
- WWF advocates a new ecosystem based forest policy for Sweden



# Forest Landscapes in the Future – WWF's vision

## Boundaries of nature

Use of the forest landscape is eco system based  
and within boundaries of nature



**Biodiversity**

**Green  
infrastructure**

**Multiple use**



## Ten steps towards 2020

1. **New ecosystem based forest policy**
2. **Moratorium on Intensification**
3. **Protect at least 17% and all forests with high biological values**
4. **Environmental consideration based on critical thresholds**
5. **Ensure space for large scale ecological processes**
6. **Systems for handling invasive and exotic species**
7. **Ensure long-term production of ecosystem services**
8. **Stimulate continuous cover forestry**
9. **Strengthen consideration to water resources**
10. **Develop landscape governance**



# Thank you!

---

[www.wwf.se](http://www.wwf.se)

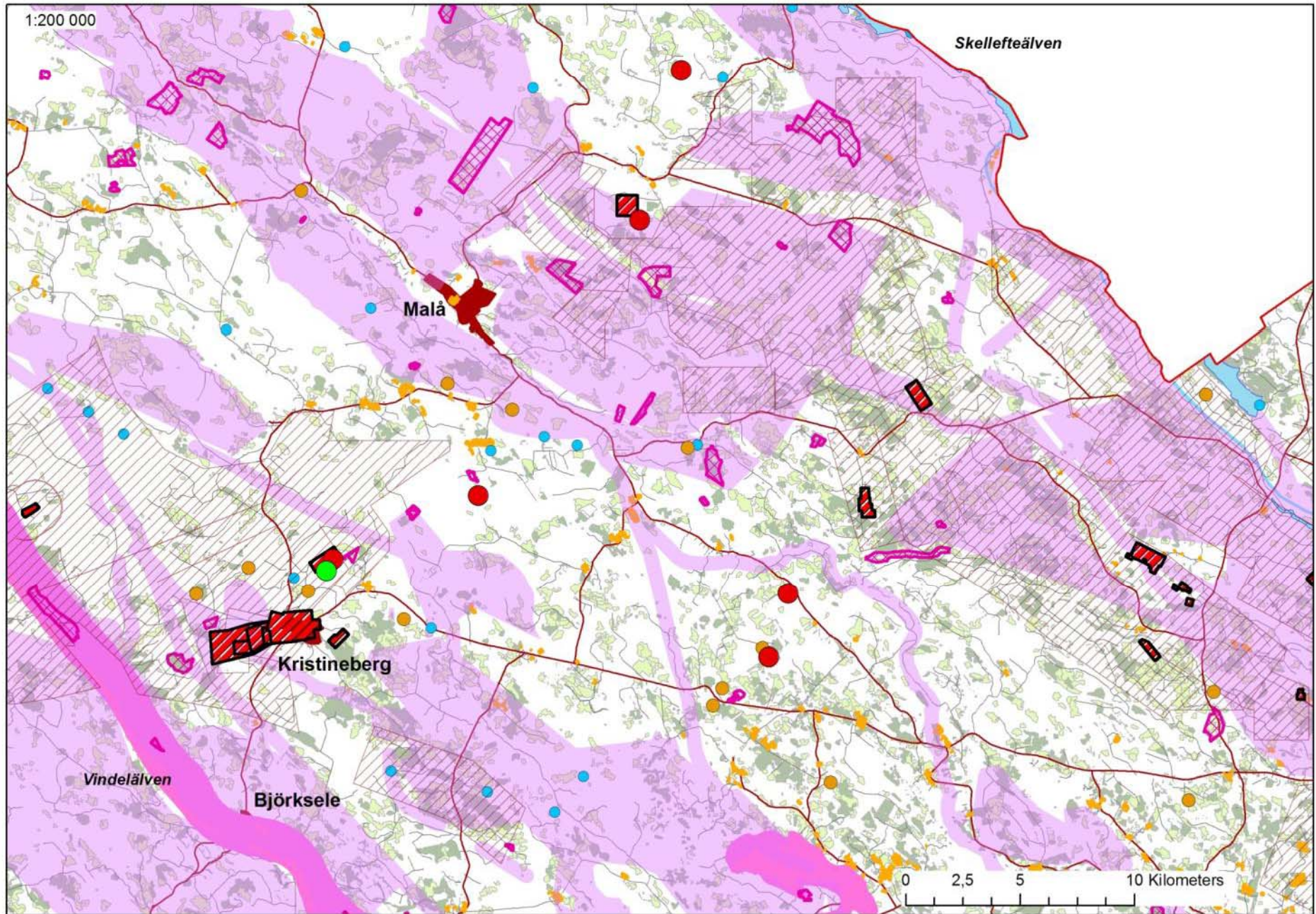
[www.panda.org](http://www.panda.org)



---

Photo: © Michel Roggo / WWF-Canon





# Forest Landscapes in the Future – WWF's Vision

## Boundaries of nature

---

Use of the forests landscape is eco system based and within boundaries of nature

## Biodiversity

---

Bio diversity and ecosytem functions are ensured over the whole Swedish forest landscape.



## Multiple use

---

The forest landscape generates many important values / resources and is based on multiple use.

## Green infrastructure

---

The forest landscape has connectivity which creates a green infrastructure that creates resilient ecosystems which acts as a buffer against climate change impacts.

Photo: © Michel Roggo / WWF-Canon