



IUFRO

International Union of
Forest Research Organizations

The World's Network of Forest Science

www.iufro.org

WHAT IS IUFRO ?

As the World's Network of Forest Science

- IUFRO is **the only world-wide** international organization devoted to **forest research**.
- It unites **15,000+ scientists** in **600+ Member Organizations** in **100+ countries**.
- **700+ voluntary officeholders** are active in about **260 research units**.
- Founded in **1892**, IUFRO has a **long history** of international forest science cooperation.

MISSION

IUFRO promotes **global cooperation in forest-related research** and enhances the understanding of the ecological, economic and social aspects of forests and trees, including wood and non-wood products, goods and services.

It **disseminates scientific knowledge** to stakeholders and decision-makers and **contributes to forest policy and on-the-ground forest management**.



International Union of Forest Research Organizations

Union Internationale des
Instituts de Recherches
Forestières

Unión Internacional
de Organizaciones de
Investigación Forestal

Internationaler
Verband Forstlicher
Forschungsanstalten



HOW DOES IUFRO WORK?

- IUFRO **provides a global structure** for science cooperation related to forests and trees.
- Within this structure, member scientists from all around the world **collaborate on a voluntary basis**.
- The structure allows IUFRO to **address research needs and priorities** of its members, policy-makers, practitioners and stakeholders.



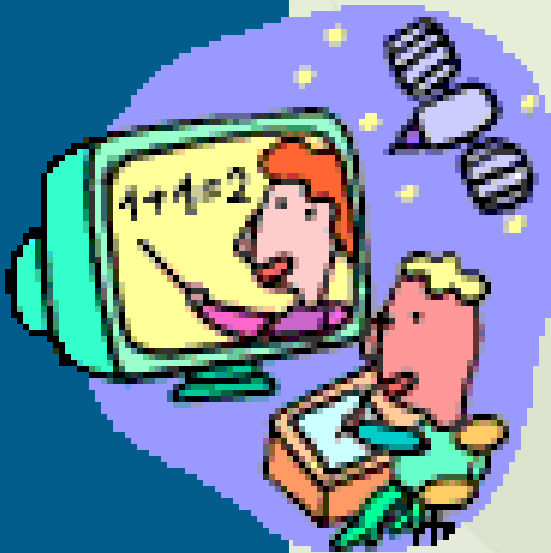
- Core forest research fields or disciplines are covered by **IUFRO's 9 Divisions** with their 60+ Research Groups and 170+ Working Parties.
- Cross-cutting key issues of relevance to policy makers and groups inside and outside the forest sector are addressed by **9 interdisciplinary Task Forces**.

BENEFITS OF MEMBERSHIP

- Unique **networking** possibilities
- International, national, and local **representation**
- IUFRO **publications** – keeping your cutting edge
- Eligibility to place news items in IUFRO **media**
- Unrestricted access to the IUFRO **webpages**
- Eligibility for IUFRO **awards**
- Opportunity to take a **leading role** within IUFRO
- Support for **developing countries**



NETWORKING ACTIVITIES



- Generation, exchange and dissemination of scientific knowledge
- Provision of access to relevant information for policy-makers, practitioners and stakeholders
- Assistance to scientists and institutions to strengthen their research capacities
- Participation in international science initiatives
- Full member of the International Council for Science (ICSU)

IUFRO Meetings and Joint Activities

- IUFRO World Congresses attract more than 2000 participants
- About 70 IUFRO conferences and workshops per year; joint publications
- Joint activities and partnership agreements with national governments, as well as regional and global organizations and NGOs



IUFRO World Congresses

IUFRO Congresses are usually held **every five years.**

The **time between Congresses is the working period** of the IUFRO Board and officeholders.

The Congress in plenary session is the **general assembly** of IUFRO members.

23 World Congresses
since IUFRO's foundation
in 1892

7th IUFRO World Congress
in Stockholm in 1929

24th Congress to be held in
Salt Lake City, USA, in 2014



24th IUFRO World Congress

Where

Salt Lake City, Utah, USA
Salt Palace Convention Center

When

5-11 October 2014

Congress Title

Sustaining Forests, Sustaining People
The Role of Research



IUFRO WORLD CONGRESSES ARE IMPRESSIVE

Recent Congresses attracted **more than 2000 participants.**

A **top quality program** from the scientific, social and cultural perspectives offers an invigorating experience of networking and scientific exchange on a broad scale.

The **host country can showcase** its forest-related activities and achievements and impress the international guests with its culture and hospitality.



IUFRO STRATEGY



IUFRO STRATEGY 2010 – 2014

*“Reading the pulse
of forest science
for the benefit of
forests and people”*

INSTITUTIONAL GOALS

Goal 1

To strengthen research and expand IUFRO's capacity for interdisciplinary cooperation

Goal 2

To strengthen coordination within the scientific community and increase research findings

Goal 3

To further strengthen IUFRO's work at the science-policy interface



International Union of Forest Research Organizations

Union Internationale des
Instituts de Recherches
Forestières

Unión Internacional
de Organizaciones de
Investigación Forestal

Internationaler
Verband Forstlicher
Forschungsanstalten

RESEARCH GOALS

Research Goals strongly focus on the following 6 thematic areas:

Forests for People

Forests and Climate Change

Forest Bioenergy

Forest Biodiversity Conservation

Forest and Water Interactions

Resources for the Future

These key themes are meant as guidance for further and interdisciplinary research.

Attaining both research and institutional goals should help IUFRO and its members to effectively respond to the changes in paradigms concerning forests and forest science and to position itself as a truly global network for forest science cooperation.



IUFRO's Science-Policy Work

Over the past years, IUFRO enhanced its contribution to global and regional policy making.

- IUFRO Special Programme for Developing Countries (IUFRO-SPDC)
- World Forests, Society and Environment (IUFRO-WFSE)
- CPF Global Forest Expert Panels (GFEP)
- Global Forest Information Service (GFIS)



International Union of Forest Research Organizations

Union Internationale des
Instituts de Recherches
Forestières

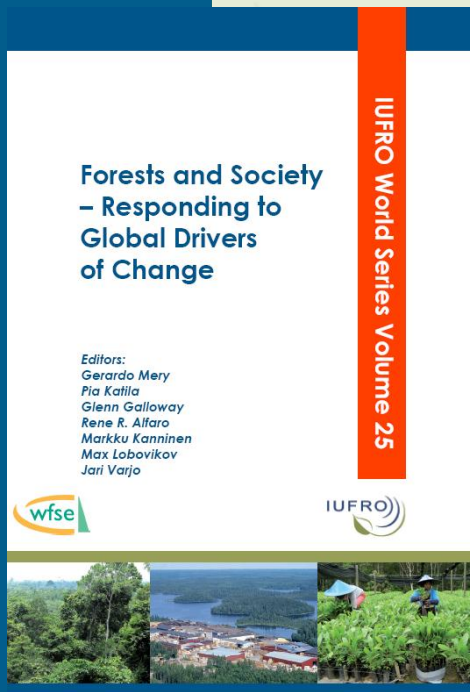
Unión Internacional
de Organizaciones de
Investigación Forestal

Internationaler
Verband Forstlicher
Forschungsanstalten

Special Project: „World Forests; Society and Environment“

New Publication:

- Main global drivers of change and their direct and indirect effects on forests and forest-dependent people
- Proposals on how to reduce the adverse effects of these drivers and take advantage of benefits and opportunities for promoting SFM
- Analysis of promising institutional settings for addressing drivers of change



Special Programme for Developing Countries



- Training in core scientific competence (e.g. proposal writing) and interaction with society (e.g. science policy interfacing; science communication)
- Best Practices Guide on Effective Work at the Science Policy Interface



BEYOND 2014

In order to position IUFRO adequately in the future, a **new IUFRO Strategy is being** elaborated and shall be adopted at the XXIV IUFRO World Congress in 2014.

IUFRO is currently doing a survey among Member Organizations and Officeholders to better understand their needs and their perception of IUFRO's role. Their opinion will be decisive in **shaping IUFRO's future!**

IUFRO's Science-Policy Work

Over the past years, IUFRO enhanced its contribution to global and regional policy making.

- IUFRO Special Programme for Developing Countries (IUFRO-SPDC)
- World Forests, Society and Environment (IUFRO-WFSE)
- CPF Global Forest Expert Panels (GFEP)
- Global Forest Information Service (GFIS)



International Union of Forest Research Organizations

Union Internationale des
Instituts de Recherches
Forestières

Unión Internacional
de Organizaciones de
Investigación Forestal

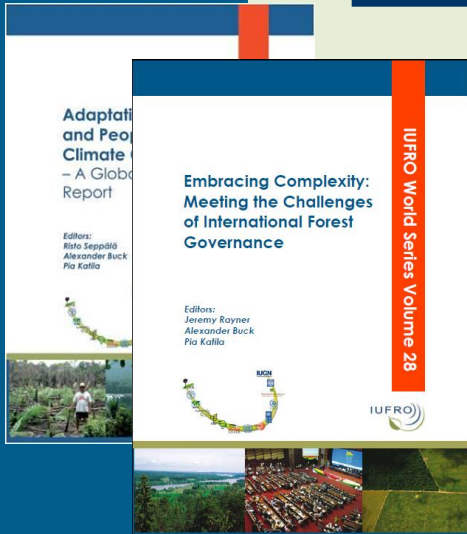
Internationaler
Verband Forstlicher
Forschungsanstalten

Global Forest Experts Panels

- IUFRO-led initiative of the Collaborative Partnership on Forests
- Comprehensive scientific assessments of existing information about key issues in order to support decision-making at the global level
- Feeding of assessment results into negotiations in international fora related to forest policy (e.g. UNFCCC, CBD, UNFF sessions)



Products



- Focused reports reflecting the state-of-the-art understanding on the subject matter
- Publication of Results
 - Comprehensive peer reviewed assessment report
 - ‘Policy Brief’: Summary for policy makers



GFIS promotes the dissemination and sharing of forest-related information. Information providers share news, events, publications, projects, job vacancies, datasets and databases.

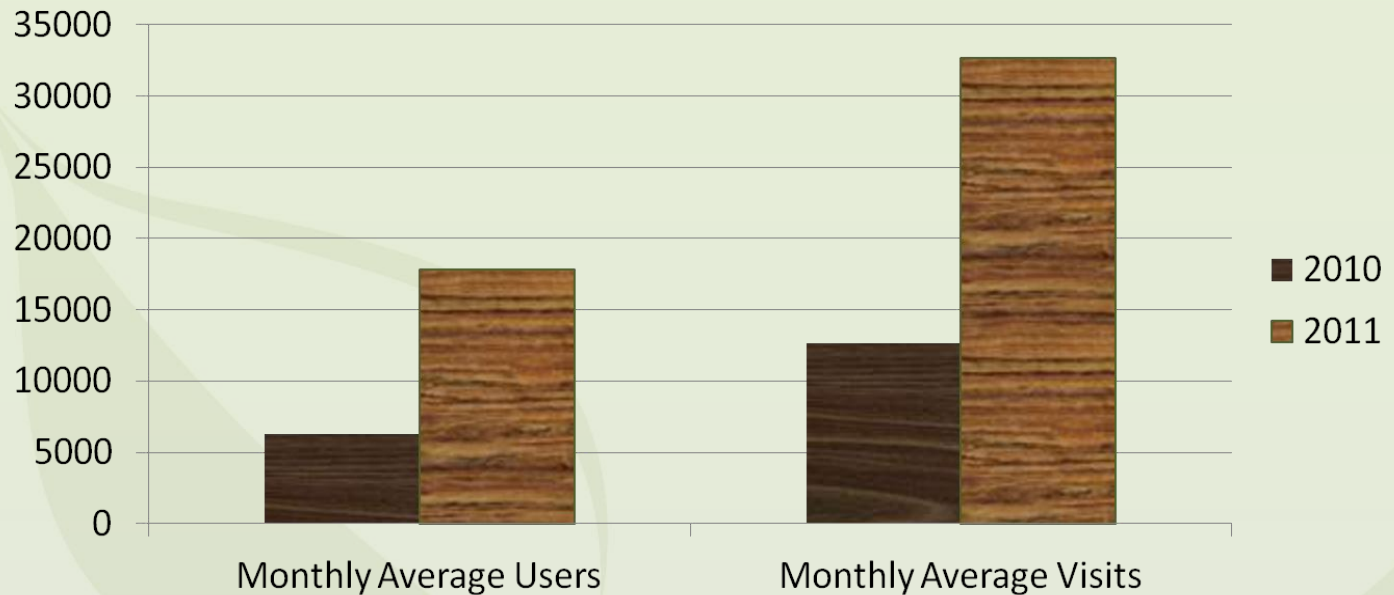
GFIS allowing forest related organizations to promote their information globally with virtually no investment

355 Information Providers; 340 RSS Feeds;
104 136 searchable items indexed

Quick facts

- Information harvested every 2 hours from partner websites.
- Users are taken to the original source of the information on the internet via hyperlink.
- Information stored on GFIS is easily searchable.
- GFIS's interface can be used in Swedish as well as 11 other languages to browse information in multiple languages.

User statistics



- Close to 300% growth in Individual Users from 2010 to 2011
- Over 500% growth in usage rates over the same period
- Traffic from over 165 different countries on average

Partnership Agreement

- Provides the framework for cooperation between IUFRO and a donor agency
- Addresses issues of mutual interest, whereby IUFRO provides scientific input, capacity building, science-policy interactions and information sharing
- Extends over several years with annual work plans and budgets
- Benefit to donor: access to a global network of forest-related scientific knowledge and expertise

Example: Partnership Agreement between IUFRO and Finland

- Established between IUFRO and **Finnish Ministry of Foreign Affairs (FORMIN)** in May 2006
- **Objective:** Enhance contribution of forest science to international policy processes and implementation of SFM, particularly in economically disadvantaged countries
- **Implementation** based on annual work plan and budget, supported by collaboration with **Metla**

Example: Partnership Agreement between IUFRO and Finland (ctd.)

Three “work packages”:

- **Policy support:** enhance forest science input to international processes
- **Capacity building:** assist forest research institutions to effectively contribute to shaping forest policies and SFM systems
- **Information and dissemination:** provide information services to scientists and policy makers with focus on developing countries

Collaboration with Finnish Forest Research Institute (Metla)

Metla provides generous in-kind support to IUFRO:

- Metla hosts **Global Forest Information Service** and provides GFIS Coordinator and Management Unit
- Metla provides Coordinator and Content Editor for Special Project “**World Forests, Society and Environment**” (WFSE)
- Metla leads and coordinates IUFRO Task Force on “**Forests and Human Health**”



**International Union of Forest Research Organizations
 Union Internationale des Instituts de Recherches Forestières
 Internationaler Verband Forstlicher Forschungsanstalten
 Unión Internacional de Organizaciones de Investigación Forestal**

The World's Network of Forest Science



www.iufro.org

International Union of Forest Research Organizations
 Union Internationale des Instituts de Recherches Forestières
 Unión Internacional de Organizaciones de Investigación Forestal
 Internationaler Verband Forstlicher Forschungsanstalten